

10.2 Media Specifications

Multimedia Filters

| AmeriWater Part # | Media Type | Specification |
|-------------------|------------|------------------------------|
| 33-0050 | Gravel | 1/2 x 1/4 Gravel |
| 33-0040 | Gravel | 3/16 x 10 Gravel |
| 36770115 | Garnite | #30 Garnite |
| 33-0020 | Sand | #00 Sand |
| 36770114 | Anthracite | #1, 0.60 - 0.80MM Anthracite |

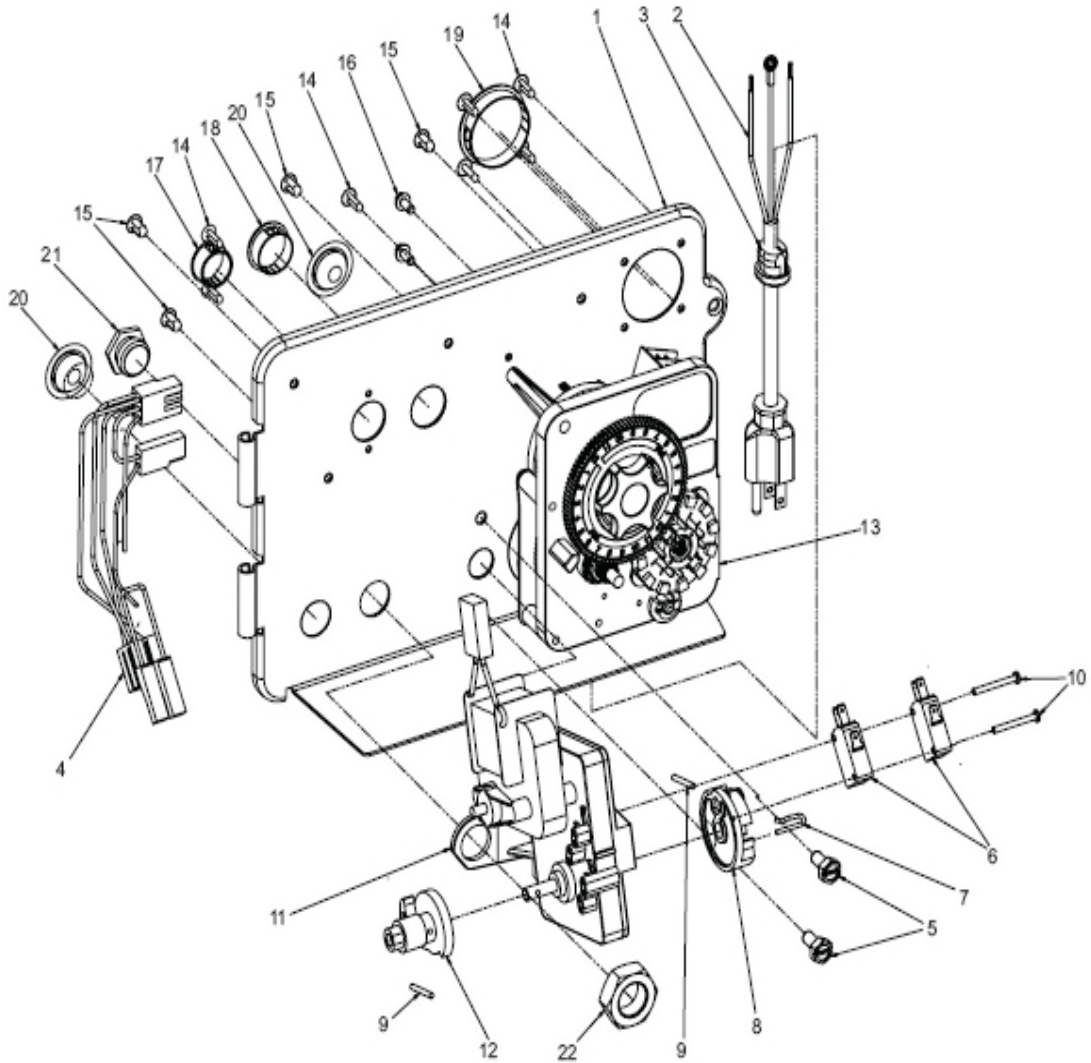
Carbon Filters

| AmeriWater Part # | Media Type | Specification |
|-------------------|------------|--|
| 33-0070 | Gravel | 1/4 x 1/8 Gravel |
| 34310456 | Carbon | 12 x 40 Mesh, Acid Washed, Granular Activated, Coal Based, Iodine Number \geq 1000 |

Softeners

| | | |
|----------|----------------|---|
| 33-0070 | Gravel | 1/4 x 1/8 Gravel |
| 32540627 | Softener Resin | Sodium form standard crosslinked gel strong acid cation resin, 16 – 50 mesh, capacity > 1.7 meq/mL (Na Form), water retention 40 - 52% (Na Form), 90% Minimum Sphericity. |

10.3 Environmental Power Head Assembly

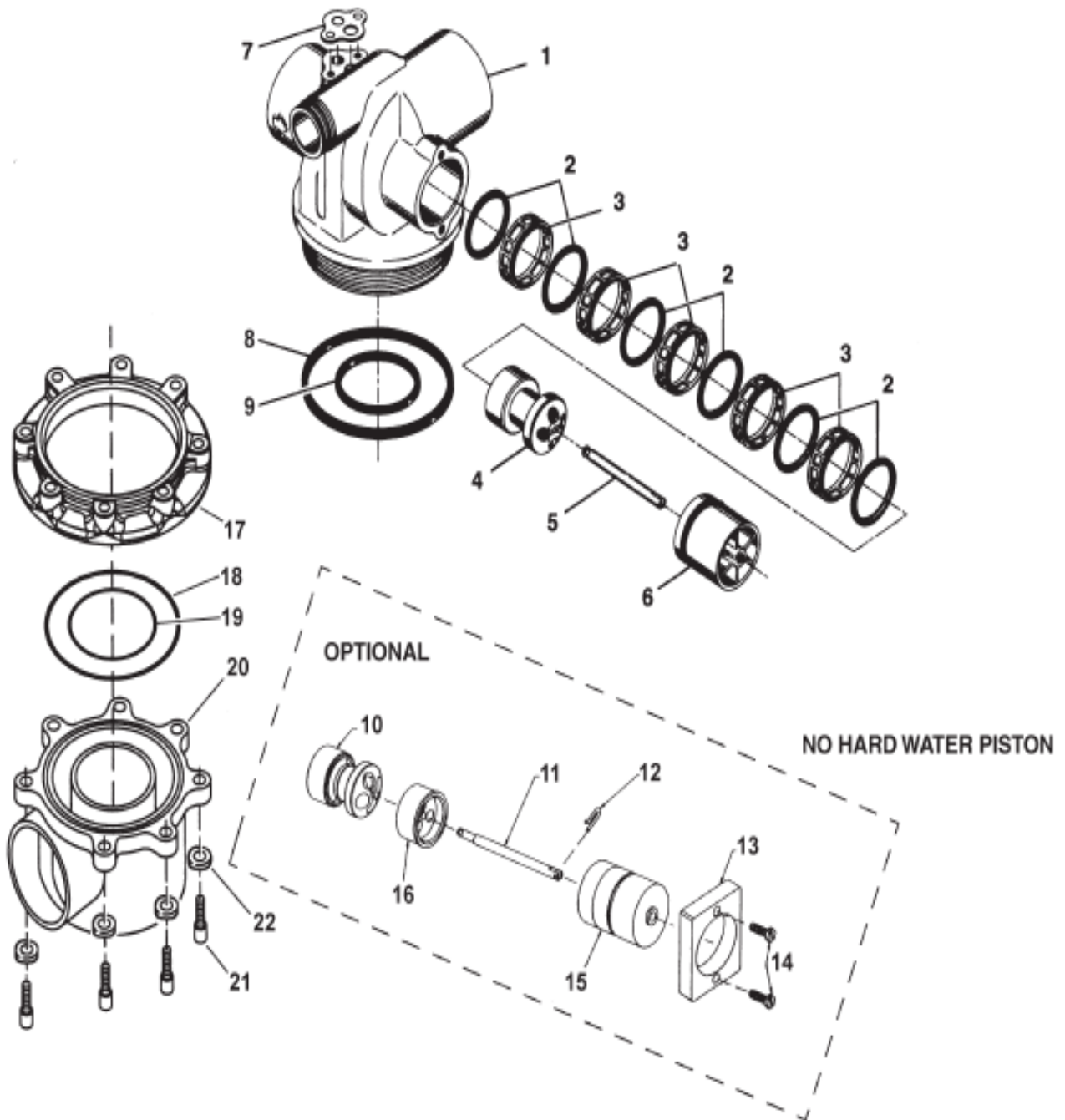


61501-2850 REV B

Environmental Power Head Assembly Parts List

| Item No. | Quantity | Part No. | Description |
|------------------------|----------|------------|---|
| 1 | 1 | 18697-13 | Backplate, Hinged |
| 2 | 1 | 11838 | Power Cord, 6' Fleck |
| 3 | 1 | 13547 | Strain Relief, Cord |
| 4 | 1 | 40400 | Harness, Drive, |
| Designer/Environmental | | | |
| 5 | 2 | 10231 | Scrw, Slot Hex, 1/4-20 x 1/2 |
| 6 | 2 | 10218 | Switch, Micro |
| 7 | 1 | 10909 | Pin, Connecting Rod Spring |
| 8 | 1 | 60160-15 | Drive Cam Assy, STF, Blue, 2900 |
| 9 | 2 | 10338 | Pin, Roll, 3/32 x 7/8 |
| 10 | 2 | 14923 | Screw, Pan HD Mach, 4-40 x 1 |
| 11 | 1 | 41543 | Motor, Drive, 115V/60HZ |
| 12 | 1 | 12777 | Cam, Shut-off Valve |
| 13 | 1 | 61502-3200 | Timer Assy, 3200 Clock(NOT WITH SXT CONTROLLER!) See Section 10.4 for SXT parts list. |
| 14 | 7 | 19800 | Plug (Hole Size: Dia .140) |
| 15 | 4 | 19801 | Plug, Dia .190 |
| 16 | 2 | 10300 | Screw, Hx Wash Head, 8 x 3/8 |
| 17 | 1 | 15806 | Hole Plug, Heyco |
| 18 | 1 | 16493 | Plug, Hole, Heyco, .88 Dia |
| 19 | 1 | 40306 | Plug, 1.50 Hole, Dome, Heyco |
| 20 | 2 | 19691 | Plug, .750 Dia. Hole, Flush |
| 21 | 1 | 10712 | Fitting, Brine Valve |
| 22 | 1 | 10269 | Nut, Jam, 3/4-16 |

10.4 Valve Assembly



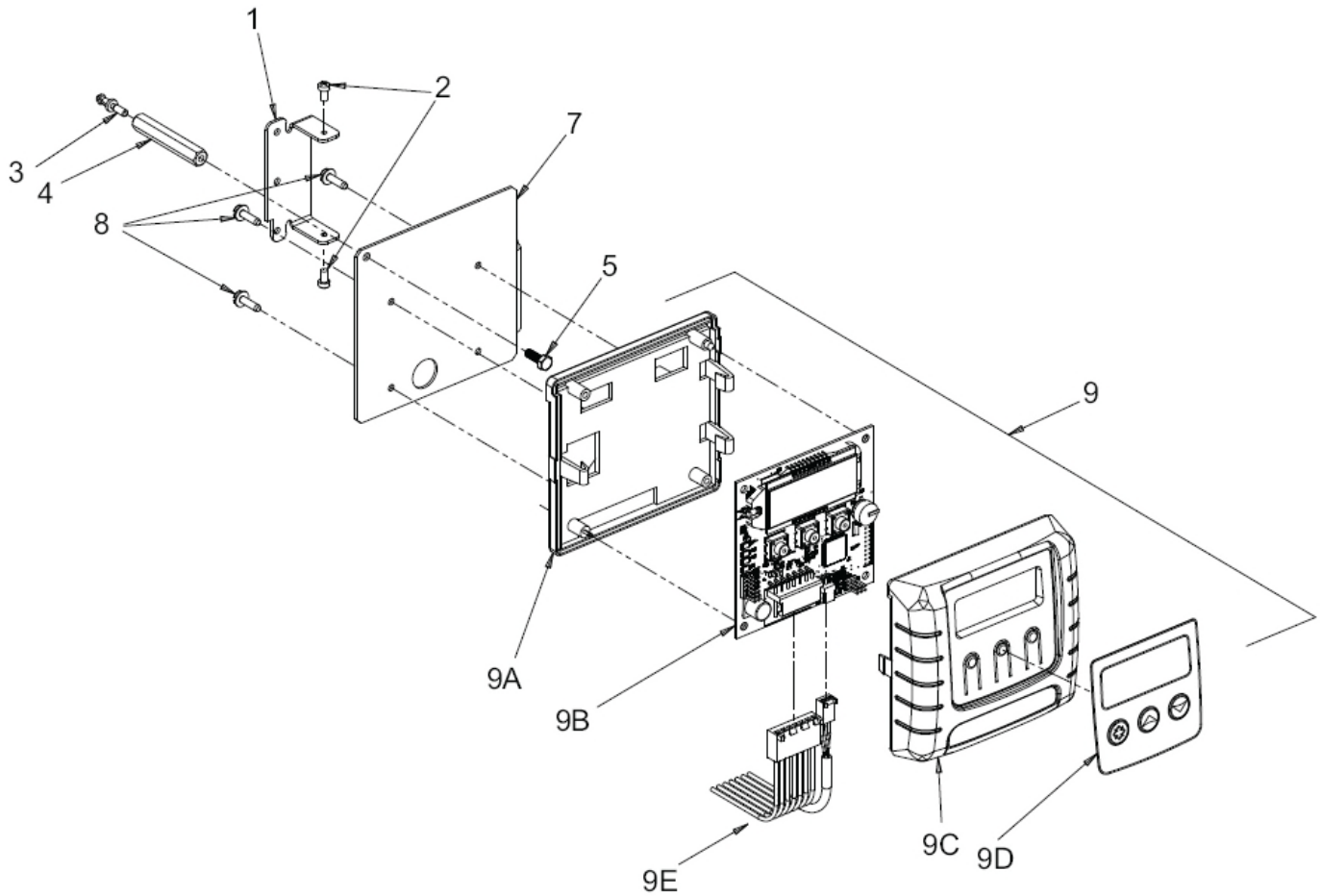
61500-2850_REVB

Valve Assembly Parts List

| Item No. | Quantity | Part No. | Description |
|-----------------------------|----------|----------|---|
| 1 | 1 | 16250-01 | Valve Body, 2850, Machd |
| 2 | 6 | 16101 | Seal, 2850 |
| 3 | 5 | 16638 | Spacer, 9500/2850 |
| 4 | 1 | 16092 | Piston, 2850 |
| 5 | 1 | 16436 | Piston, 2850 |
| 6 | 1 | 16395 | End Plug Assy, 2850 |
| 16395-01 | | | End Plug Assy, 2850, Hot Water |
| 7 | 1 | 14805 | Gasket, Injector Body, 1600/1700 |
| 8 | 1 | 16455 | O-ring, -347 |
| *9 | 1 | 13577 | O-ring, -226 |
| 10 | 1 | 19606 | Piston, 2850, NHWBP |
| 11 | 1 | 19300 | Rod, Piston, 2850 |
| 12 | 1 | 10909 | Pin, Link |
| 13 | 1 | 19339 | Spacer, 2850, NHWBP |
| 14 | 2 | 13386 | Screw, Hex Hd Mach, 1/4 - 20x1 |
| 15 | 1 | 16395-02 | End Plug Assy/2850, NHWBP |
| 16 | 1 | 19298-01 | Piston Assy, 2850, NHWBP, O-ring |
| Not Shown ... | 1 | 60366-xx | DLFC 1" NPT (not shown) - specify size |
| Not Shown ... | 1 | 17996 | Disperser, Air, Injector |
| Not Shown ... | 1 | 19608-15 | Disperser, Commercial 1 1/2" 2850/2900/9500 |
| Optional Side Mount: | | | |
| 17 | 1 | 40316 | Adapter, Sidemount |
| 18 | 1 | 40368 | O-ring, -160, Sidemount, Flange |
| 19 | 1 | 40372 | O-ring, -142 |
| 20 | 1 | 40310 | Base, 2850/2900/3930, Rotating |
| 21 | 7 | 19768 | Screw, Hex Hd, 3/8-16x1, Cap 18-8 |
| 22 | 7 | 40375 | Washer, Flat, 3/8, Type A, N-SERS |

* Do not use O-ring if control is side mounted.

10.5 2850SXT Timer Assembly



2850SXT Timer Assembly Parts List

| Item No. | Quantity | Part No. | Description |
|----------|----------|----------|------------------------------------|
| 1 | 1 | 13881 | Bracket, Hinge Timer |
| 3 | 1 | 14265 | Clip, Spring |
| 4 | 1 | 27172 | Stand-off, Timer, 2510SXT, 2750SXT |
| 5 | 1 | 21363 | Screw, Hex HD, M4 X 12 MM |
| 7 | 1 | 27168 | Bracket, Timer, 2510SE/2750SXT |
| 8 | 3 | 13296 | Screw, Hex Washer, 6-20 X 1/2 |
| 9 | 1 | 42778 | Timer, SXT, 2510/2750, DF |
| 9A | 1 | 19889 | Housing, Circuit Board |
| 9B | 1 | 42196 | Circuit Board, SXT |
| 9C | 1 | 42635-01 | Cover, Front, SXT, Square |
| 9D | 1 | 42637 | Label, Display, SXT |
| 9E | 1 | 42864 | Wire Harness, SXT |