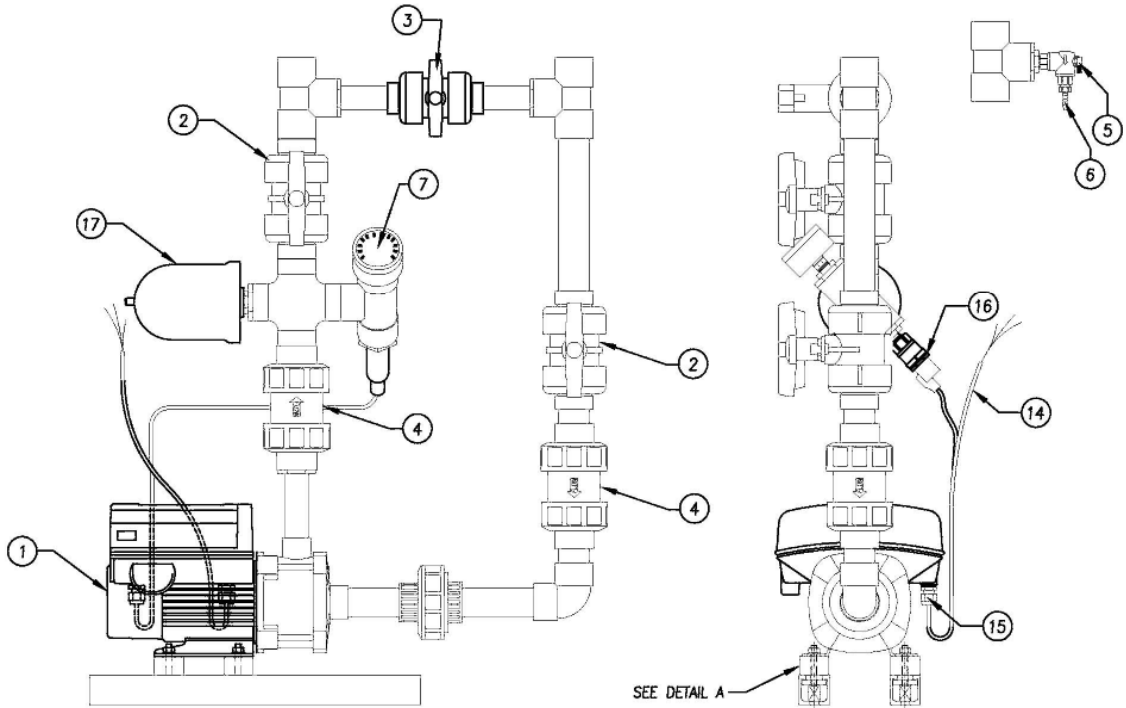


## 12. REPLACEMENT PARTS DRAWING



85-0068	17	TANK, PRESSURE, DIAPHRAGM, 1 LITER
53-0015	16	PRESSURE TRANSMITTER, TYPE MBS 3000
66510621	15	STRAIN RELIEF, .5 NPT, 1 HOLE, .19-.47 ID
66-0027	14	WIRE, SJO CORD, 300 V, 14/3, BLACK SHEATH
92531904	13	WASHER, 5/16 FLAT SS
92531907	12	WASHER, 5/16 LOCK SS
92530125	11	NUT, FLANGE, 5/17-18, HEX, SS
94725433	10	VIBRATION ISOLATORS, 5/16-18
91730214	9	UNST, SPRING NUT, .31, PLTD
91730086	8	UNST, 1.625, FIBERGLASS PE
43821445	7	GAU, 0-160, .25, PAN, 2.5, LF, SS/BR
14760335	6	ADPT, .25MPTX.25HB, PP
041004	5	VAL, BALL, EL., .25MPTXFPT, PVC80
041730384	4	VAL, CHECK, BALL, 1.25, PVC80
041720169	3	VAL, BALL, 1, TU, PVC80
041732001	2	VAL, BALL, 1.25, TU, PVC80
80-0148	1	PUMP, GRUNDFOS CME, 1.5HP, 1PH, 208-230V, PLUS TRANSDUCER
AWI P/N	ITEM #	DESCRIPTION

